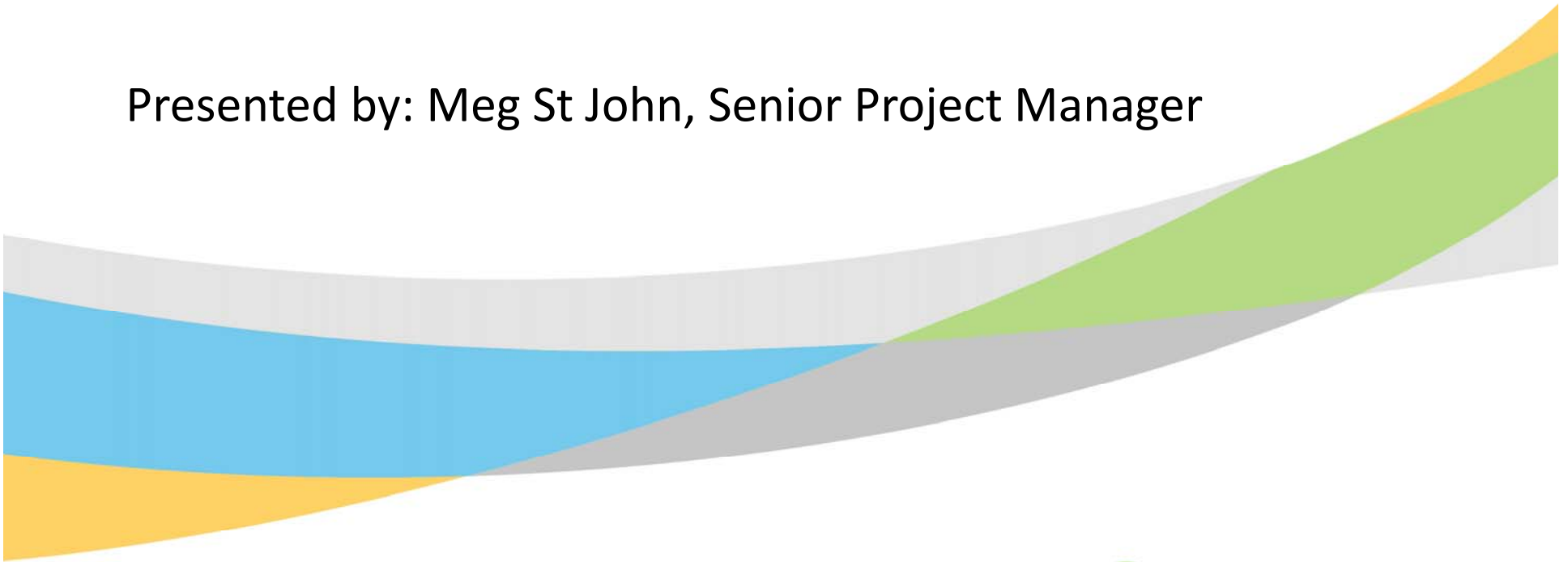


# Gibraltar Point Erosion Control Project

Lake Ontario Evening, May 14 2019

Presented by: Meg St John, Senior Project Manager



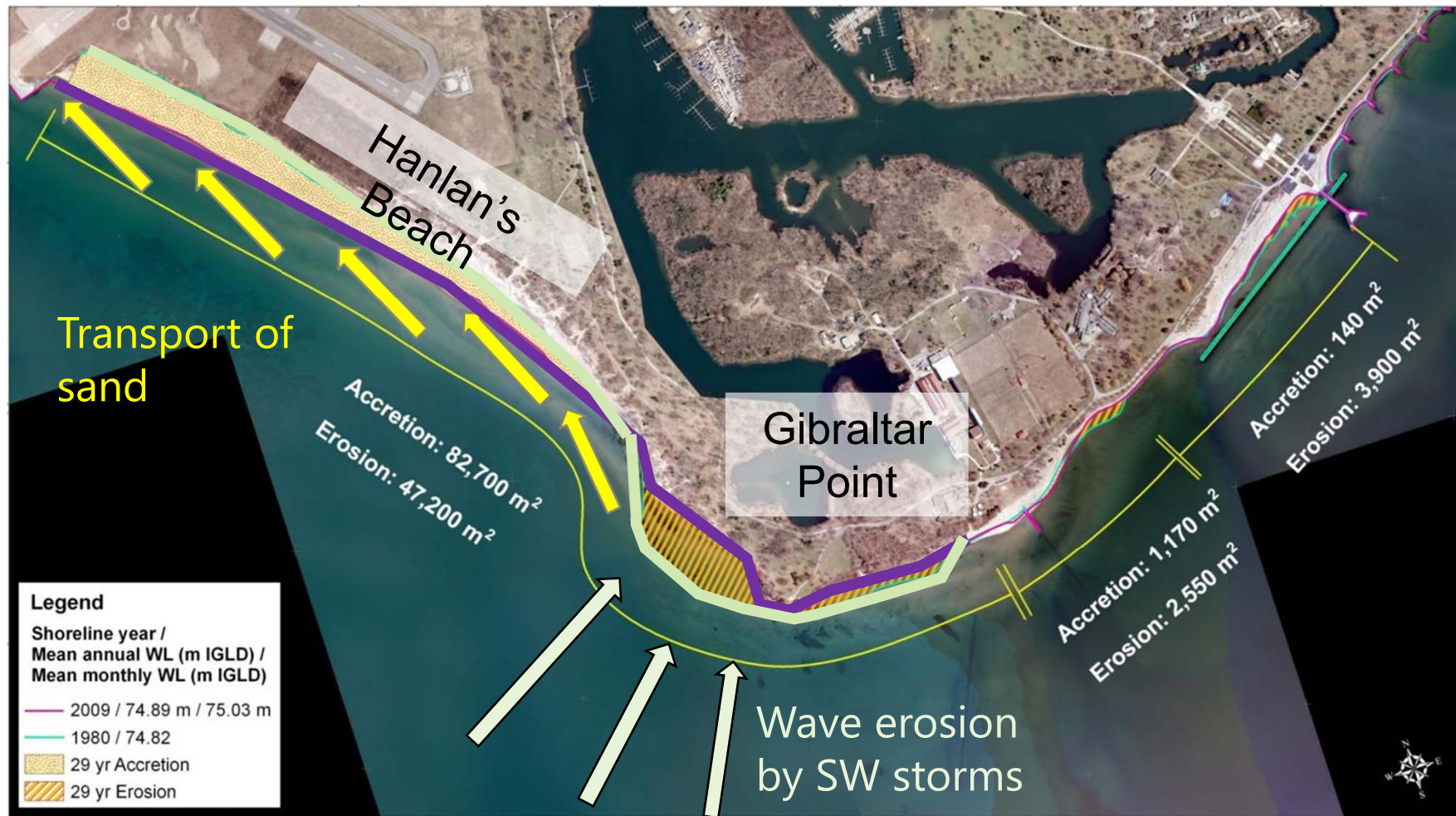
May 14, 2019

# Toronto Islands



- Historic sediment sources included the Don River and the Scarborough Bluffs
- Today, the Islands are mostly cut off from these sediment sources

# Shoreline Erosion – Process & Change Over Time



- Absent a replenishment source, sediment is eroded from Gibraltar Point and transported north to Hanlan's Beach and into the Western Gap.



# Gibraltar Point Erosion Control Project - background

- Initial Environmental Assessment started in 2004 and approved in 2008
- Addendum approved in 2018





# Impacts of Erosion at Gibraltar Point

**Recreation**



**Habitat**



**Habitat**



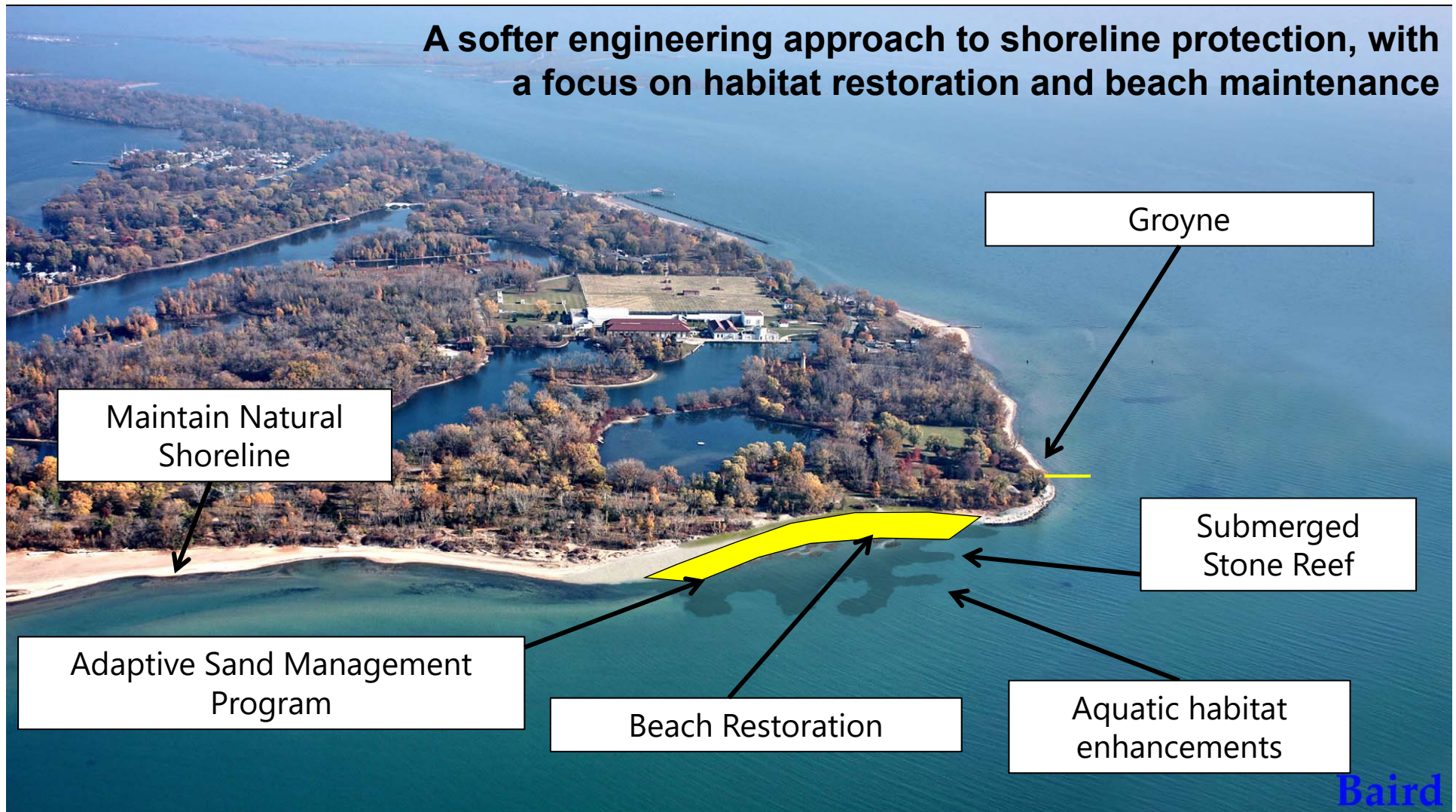
**Infrastructure**





# Gibraltar Point Erosion Control Project

**A softer engineering approach to shoreline protection, with a focus on habitat restoration and beach maintenance**



**Adaptive Sand Management:** Long-term, strategic placement of “new” sand to replace material lost through erosion at Gibraltar Point and to maintain beach nourishment at Hanlan’s Beach

# Nearshore reef as aquatic habitat

- The creation of the nearshore reef follows the recommendation of Toronto Waterfront Aquatic Habitat Restoration Strategy to create reefs in open coast areas.
- The creation of the reef will lead to an increase in essential habitats for coolwater and coldwater species.





# Monitoring





# Beach restoration at Gibraltar Point

- Nearshore reef combined with a dune beach restoration plan
- Beach design will mimic existing dune habitat



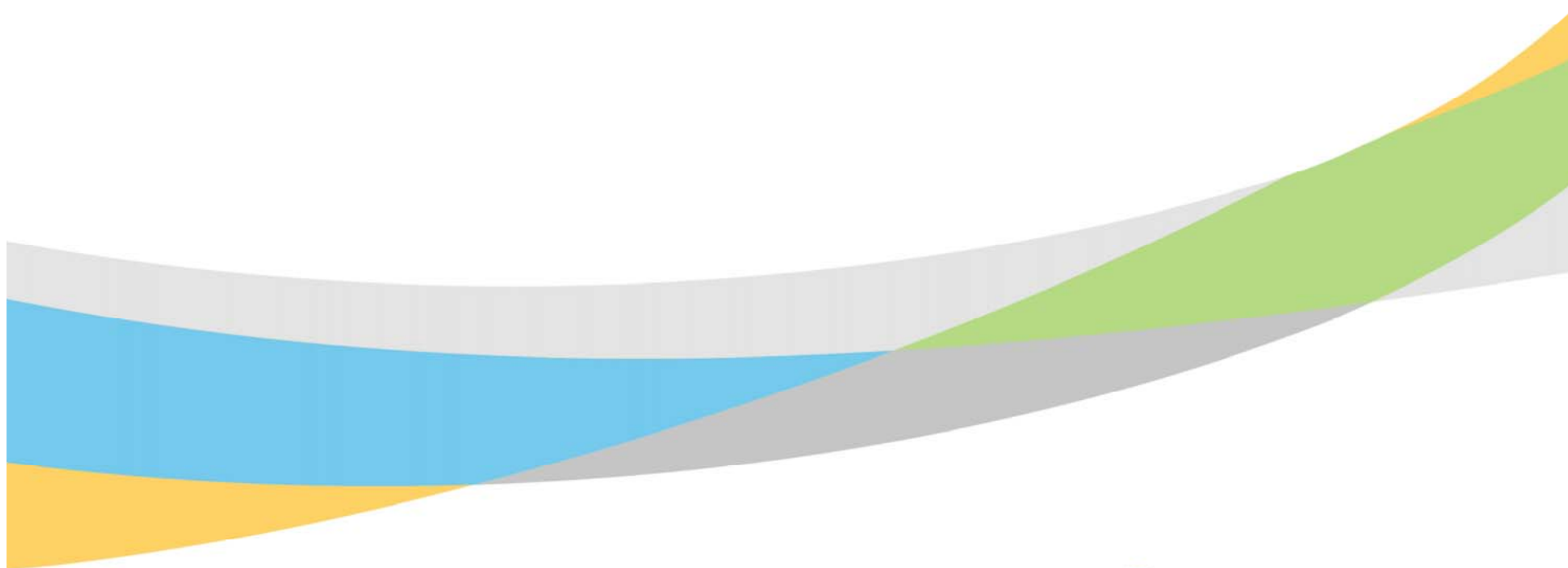
# Gibraltar Point Erosion Control Project - timeline

- Stone placement started October 24, 2018
- Nearshore reef to be completed by end of 2019
- Groyne to be built in 2020
- Beach restoration 2021





Thank you



[www.trca.ca](http://www.trca.ca)