



**Credit Valley
Conservation**
inspired by nature

Jim Tovey Lakeview Conservation Area

The Power of Partnerships

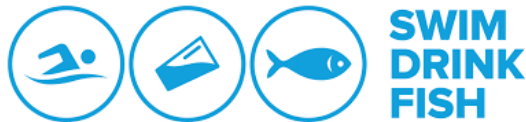
To Lake Ontario Evening
Creating new waterfront habitat

May 14th 2019

By Kate Hayes



The Power of Partnerships





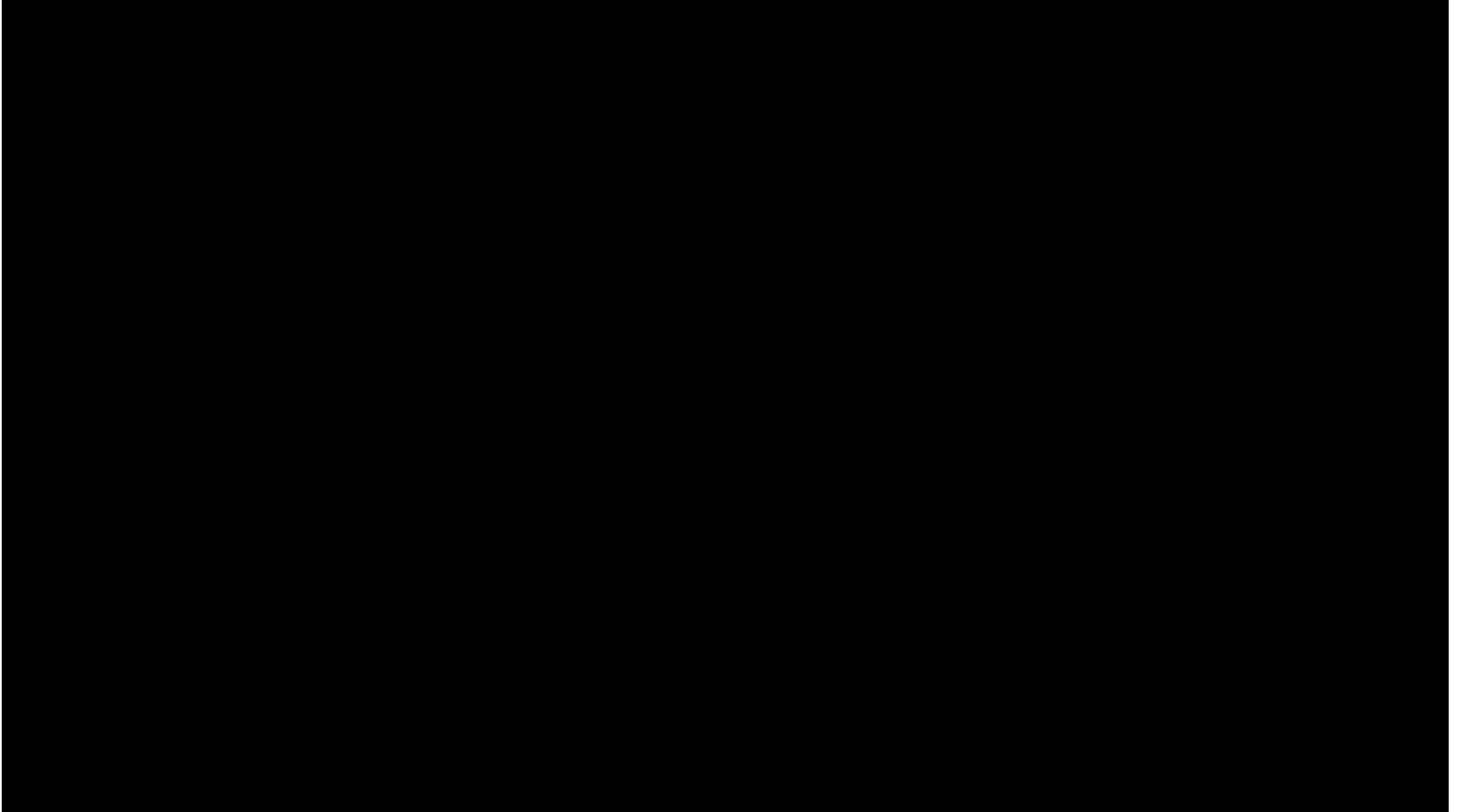
The Credit River Watershed

Credit Valley Conservation

- The primary scientific authority for the Credit River **watershed**
- We work in partnership with municipal, provincial, and federal governments, schools, businesses, individuals and community organizations to deliver local programs



What is a watershed?



22

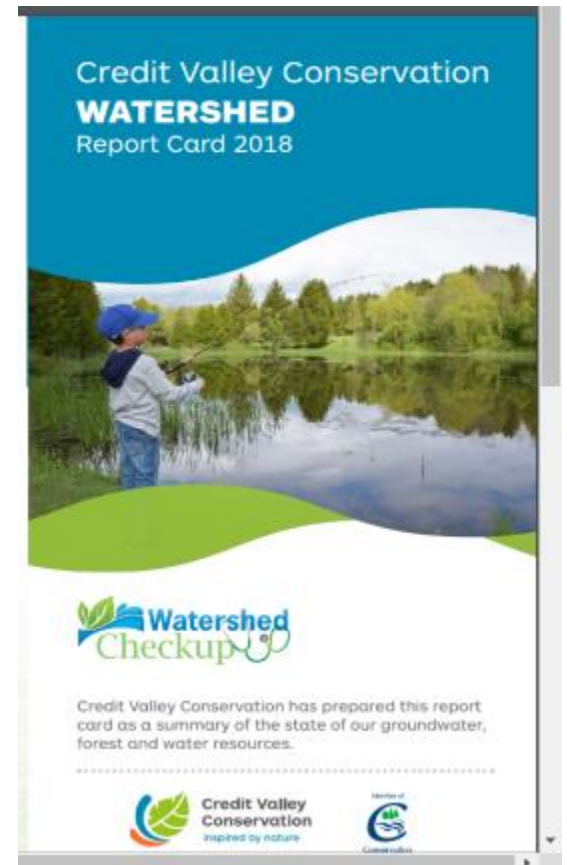


**Human and economic
well being is linked to
watershed health**

Credit River watershed: overall health

Healthier in rural areas in the north
than in urban areas

- Average forest cover: 23%
Guidelines minimum 30%
- Groundwater quality: very good
- Surface water
Rural: good
Urban: poor to very poor





Cirrhosis of the River

...how do we treat the cause and not just the symptoms?



**Watershed
based
planning
is key...**

Lake Ontario Integrated Shoreline Strategy

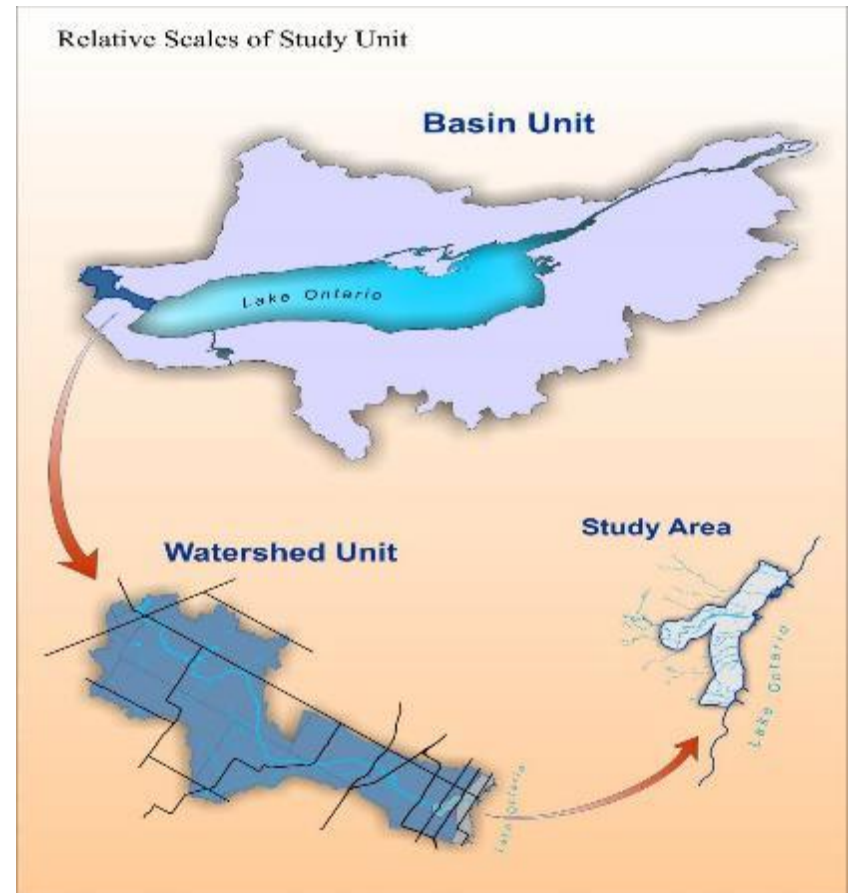
“Living by the Lake”



CVC's Shoreline Management Plan

We recognized 3 things

1. that some of the issues go far beyond the immediate shoreline
2. we needed to consider the shoreline, the watershed- and the Lake basin
3. we needed new and many partnerships



The science is important but only if....

Partners are engaged

Message is clear

Priorities are realistic

So...





Communications Strategy

Communications and Outreach

Extensive outreach based on a communications strategy

- Workshops
 - corporate groups
 - ratepayer groups
- Social media
- Mainstream media
- Boat tours
- Festivals and events





**Putting words into
action**

Action Plan: 2018

Recommendations at various scales

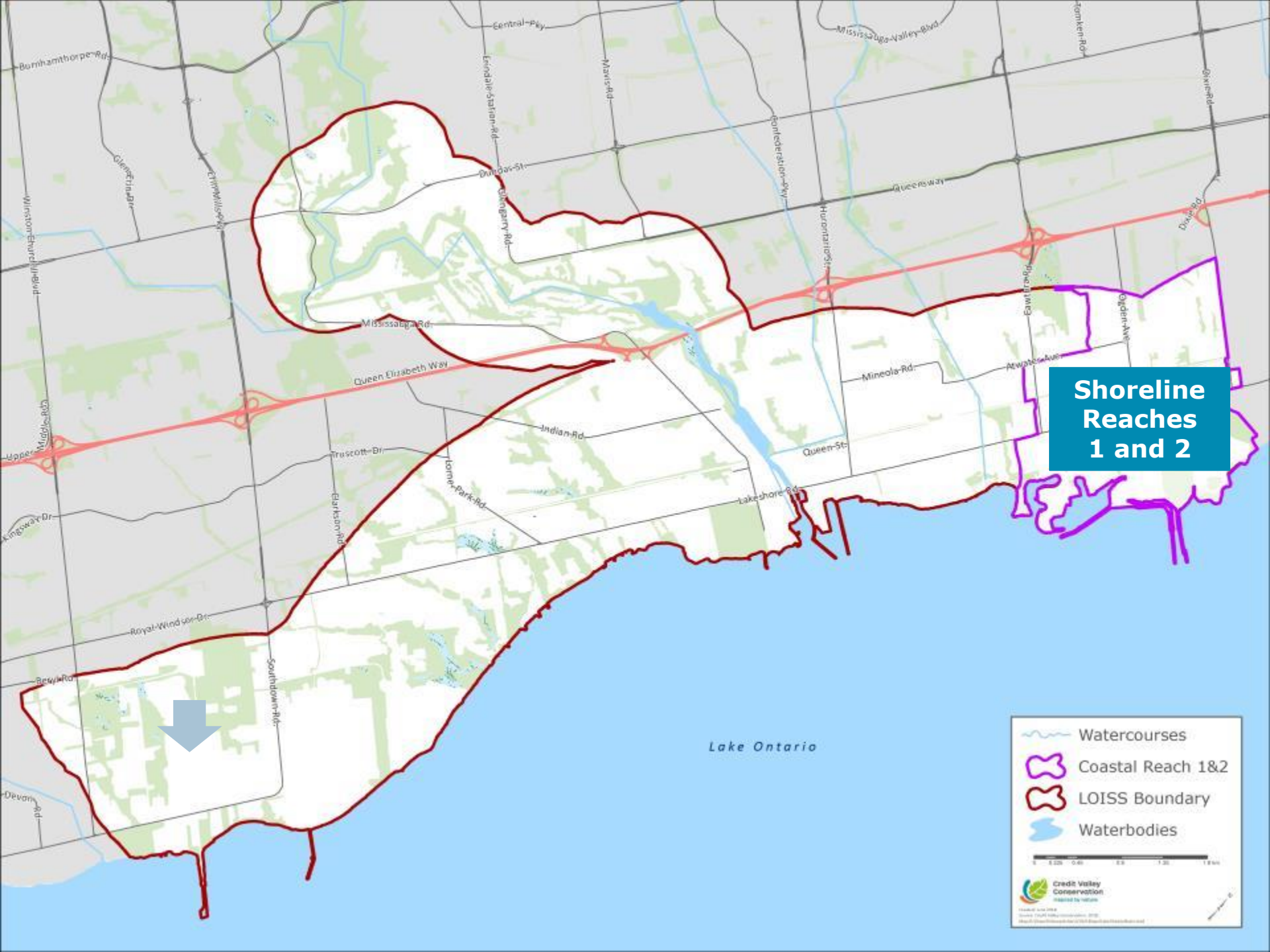
1. Credit River watershed
 2. Entire shoreline
 3. Individual shoreline reach
- 7 shoreline reaches



Living by the Lake: 2019-2039

An Action Plan to Restore the Mississauga Shoreline

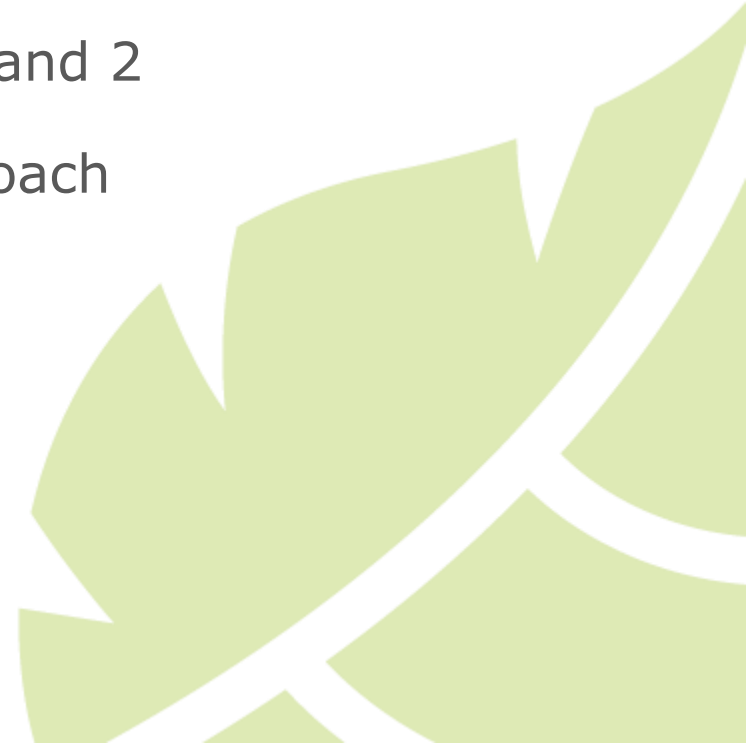
Issued December 2018



Jim Tovey Lakeview Conservation Area and Lakeview Village

Shoreline Reaches 1 and 2

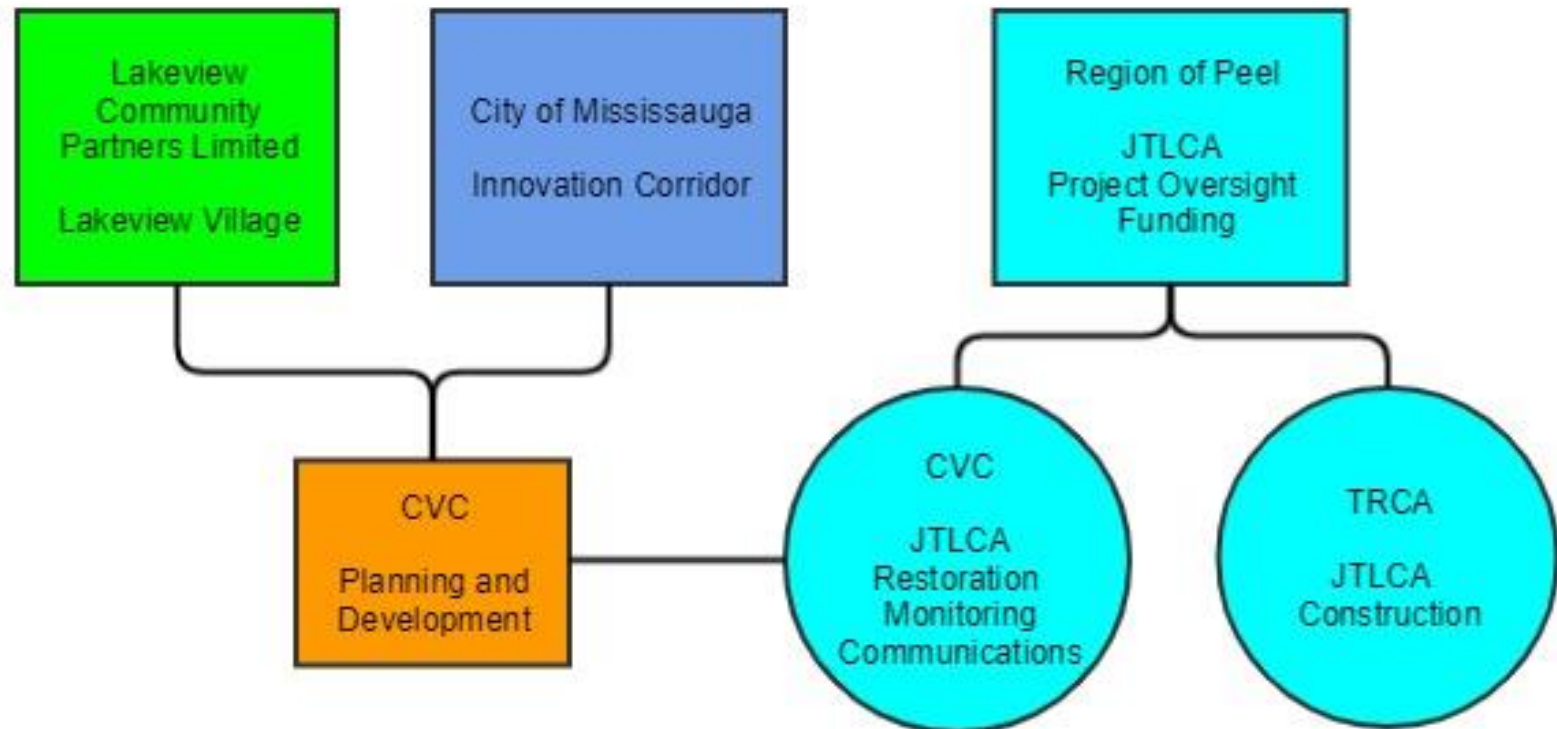
A Coordinated Approach



Jim Tovey Lakeview Conservation Area



Coordinated Partnerships



Study Area

Aquatic Habitat Degradation

- Stonehooking
- Lakefilling
- Shoreline hardening
- Little or no fish passage into creeks
- uncontrolled stormwater

Terrestrial Habitat Degradation

- Highly degraded
- Low forest cover
- No coastal wetlands



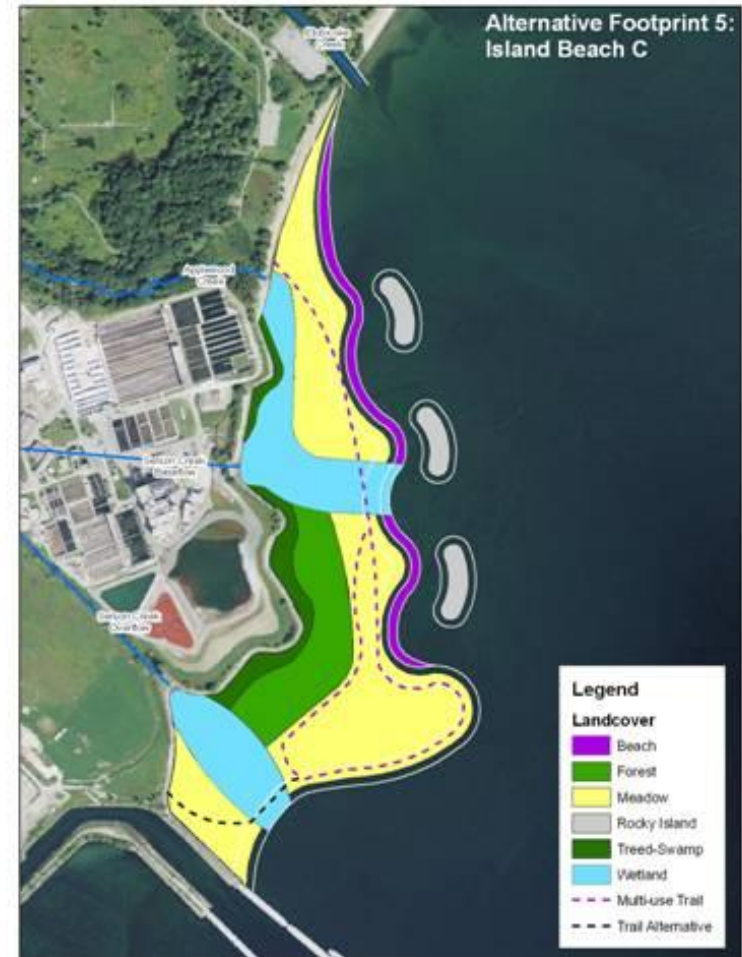
JTLCA Project Goal and Objectives

Goal

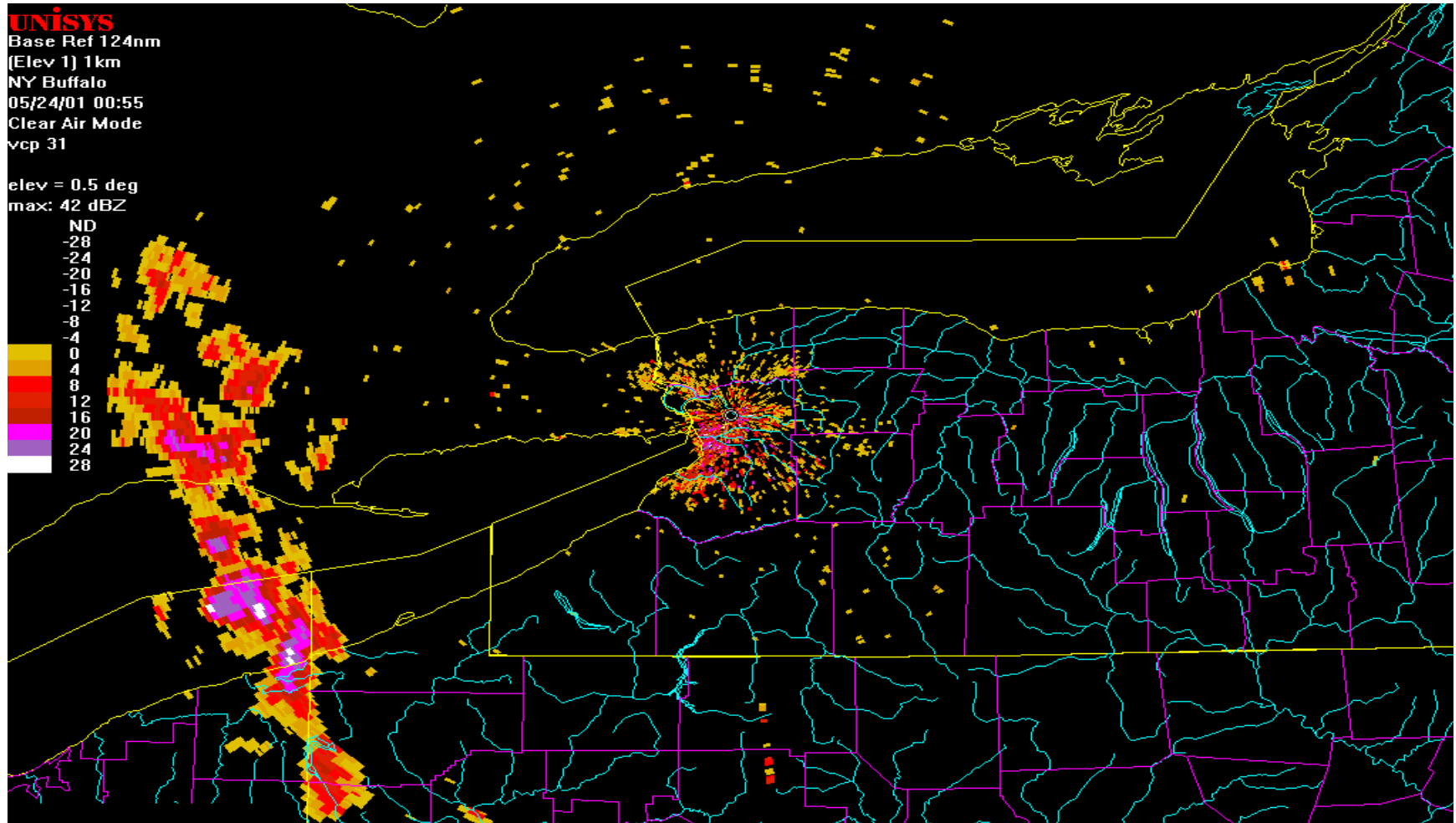
To create a new natural waterfront park that will establish **ecological habitat and public linkages** on the eastern Mississauga (Lake Ontario) waterfront

Objectives

1. Naturalization
2. Access
3. Compatibility
4. Coordination
5. Fiscal Viability



Naturalization

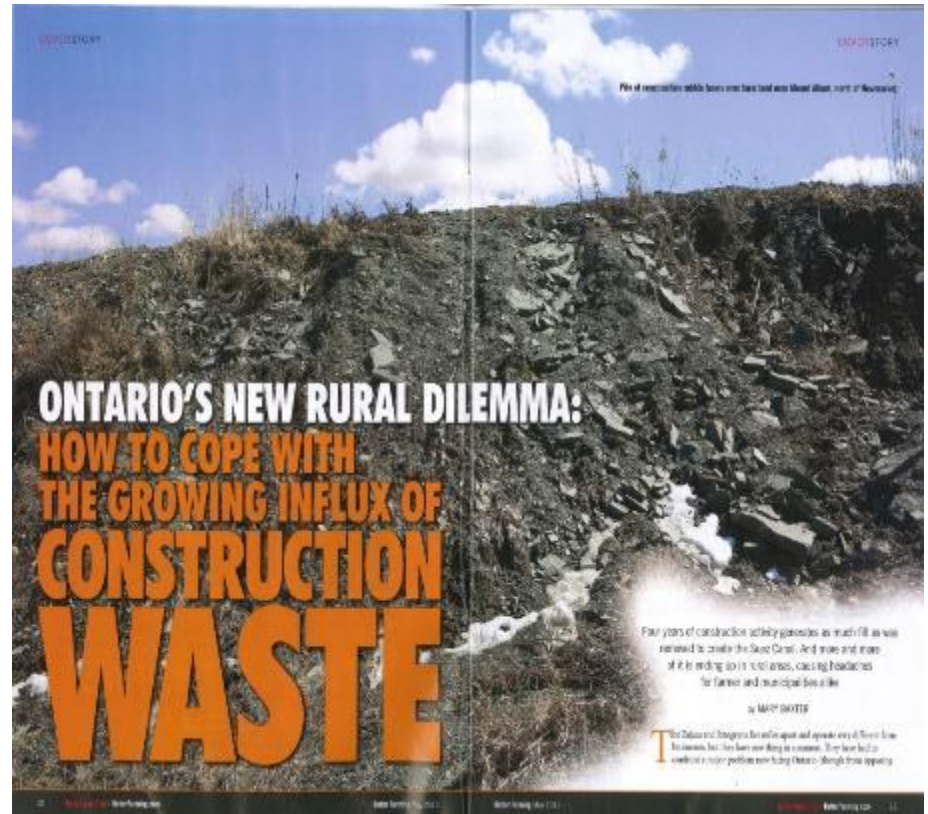


Access



Compatibility

- About 1 km² of soil 25 metres high being generated annually from development in GGH
- Reduce impacts on neighbouring communities
- Provincial practices encourage local reuse of soil



Coordination



Fiscal Viability

- Use cost savings from reuse of locally generated fill to create a regionally significant greenspace
- Increase property values in adjacent neighbourhoods by 2.4 to 3.6%



Final design: connect and improve Habitat



Serson Creek



Forest



Wetlands



Islands –
shoals and
protection



Meadows



Cobble beach



Phased Progression



Coastal Wetland #1: completed 2018



Coastal Wetland #2: Under Construction 2019



A large orange speech bubble with a thin border and rounded corners, containing the title text.

Watershed-based management and Partnerships

Connect and Improve Habitat



Shoreline Reach 2: Lakeview Village

- **Connected** to nature
- **A continuously linked** waterfront .. providing an uninterrupted water's edge **connection from east to west** Mississauga.

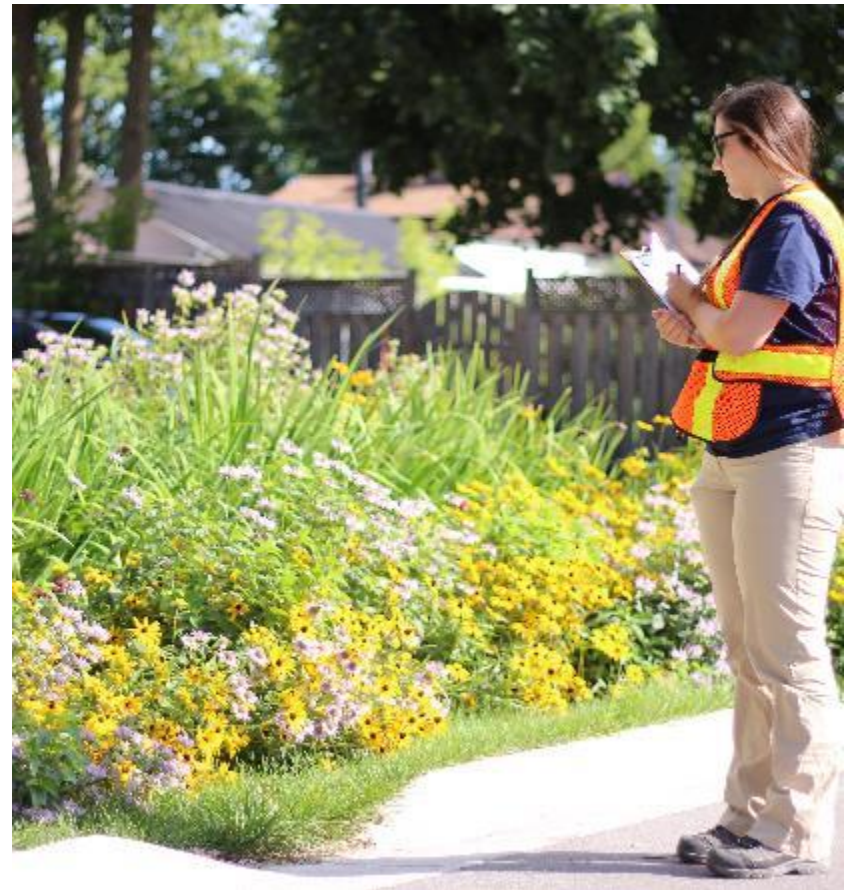




**Don't forget the
watersheds!**

Applewood Creek watershed

- Culvert upgrades at Lakeshore by the city included fish passage in design. **Fish passage upstream first time in 50 years!**
- **Metrolinx** rail line upgrades Designed for fish passage. (voluntary)
- **Ministry of Transportation** widening of QEW Designed for stormwater quality improvements (voluntary)
- CVC and City of Mississauga Low Impact Development projects in watershed (stormwater management)



Serson Creek watershed

- The design of Serson Creek corridor south of Lakeshore will include fish passage
- Culvert upgrades at Lakeshore by the city included fish passage in design.





COMMUNICATION

Communications is Key

- Communications strategy
- Annual tactics rolled out and refined each year
- First Nations Band Council
- Public information sessions
- In-park outreach initiatives
- Regular updates with municipal staff



Coastal wetland: a work of art?

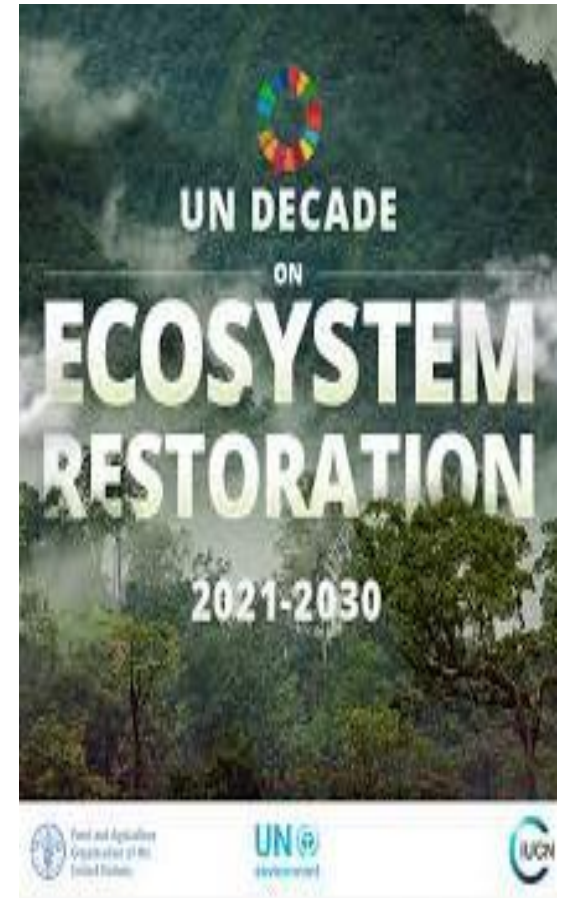




**Morphology
2018**



**Morphology
2019**



**Morphology
2021**

Partnerships: Morphology 2019



questions?

inspired by nature

